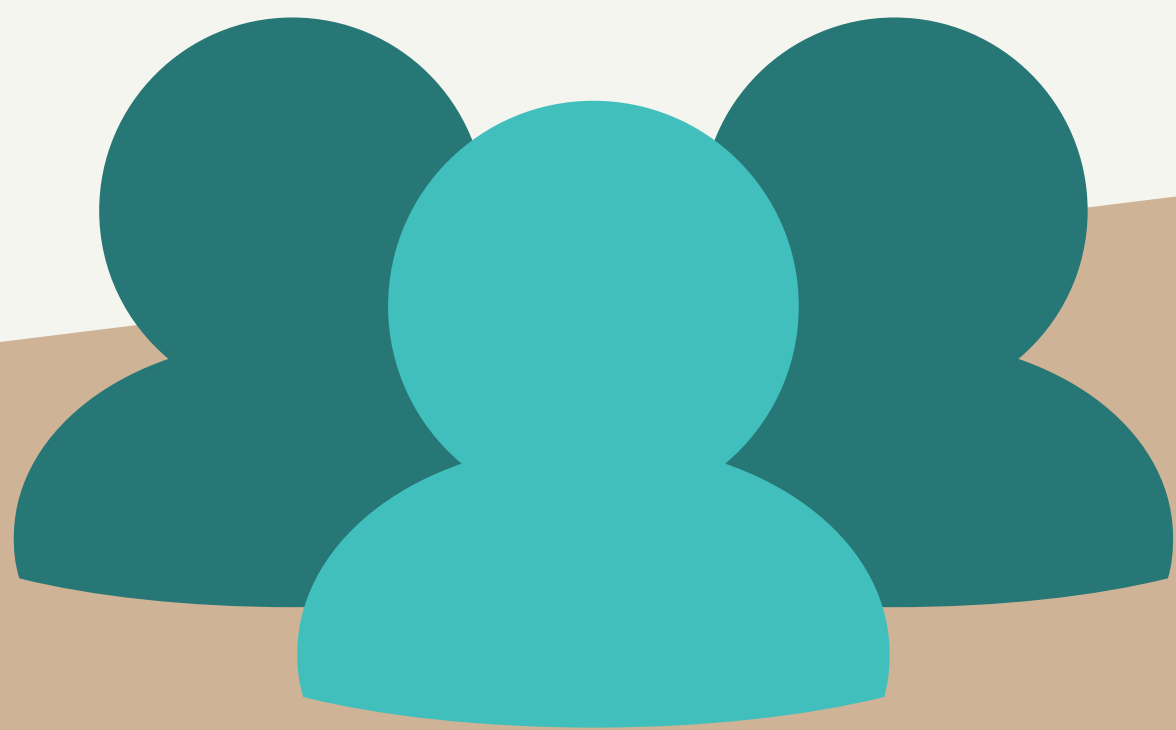




National Employment Network Association

# Membership



## Access member benefits and more

Join a **community** of over **200** professionals from Employment Networks (**ENs**), State Vocational Rehabilitation Agencies (**SVRs**), American Job Centers (**AJCs**), and other **Ticket Stakeholders** from across the country. Membership provides an opportunity to **engage with a diverse community** interested in the success of the Ticket Program and the beneficiaries we serve.

## A membership type for everyone

NENA offers **different membership options**, allowing the wider Ticket community to engage. To be a member, **you must work for** an EN, Workforce EN, VR Agency, or Ticket to Work Program stakeholder. **Each organization** is allowed **one Full Member** (Provisional or Ticket Partner, if applicable). Additional staff can join as Associate Members. All memberships are **based on the individual** and renewed on the anniversary of their join date.



## Interest Areas and special projects

**Connect, learn** and **contribute** while helping advance the Ticket to Work Program. **NENA Interest Areas** provide an excellent opportunity for members to **work together** on activities that promote best practices, provide ongoing training and development, and **enhance the Ticket Program** public-private partnership.

- Marketing & Outreach
- Ticket Operations
- Advocacy
- Training & Development
- VR / EN Partnership Plus



National Employment Network Association

# A membership type for everyone

Provisional \$175	Full Member \$175	Ticket Partner \$175
<p>For an individual who works for an organization exploring or taking steps to become an Employment Network (EN)</p> <ul style="list-style-type: none"><li>• Allows future ENs access to information and resources to help navigate the process of becoming an EN</li><li>• Available to organizations (other than SVRs and AJCs) not currently serving as an EN</li><li>• Converts to a Full Member upon Ticket Program Agreement (TPA) award</li></ul>	<p>For an individual who works for an EN, State Vocational Rehabilitation Agency (SVR), or American Job Center (AJC)</p> <ul style="list-style-type: none"><li>• Vote, seek election to the Board, or serve as an appointed Board member</li><li>• EN members can run for the Board</li><li>• SVR and AJC members can be appointed to one of five Board seats established for SVR and AJC representation</li><li>• Each organization is limited to one Full Membership</li></ul>	<p>For an individual who works for an organization that is a stakeholder in Social Security Disability Programs</p> <ul style="list-style-type: none"><li>• Work Incentives Planning &amp; Assistance (WIPA) Projects</li><li>• Organizations serving as a Protection and Advocacy for Beneficiaries of Social Security (PABSS)</li></ul>
<p><b>Associate Member</b></p> <p>Once your organization has a <b>Provisional Member</b>, additional staff can join as Associate Members</p>	<p><b>Associate Member</b></p> <p>Once your organization has a <b>Full Member</b>, additional staff can join as Associate Members</p>	<p><b>Associate Member</b></p> <p>Once your organization has a <b>Ticket Partner Member</b>, additional staff can join as Associate Members</p>
<p><b>\$75</b></p>	<p><b>\$75</b></p>	<p><b>\$75</b></p>